

Instruction Manual

Ergonomic Drum Handler



Note: The Owner/Operator must read carefully and understand all the information presented here before operation.

Content

1	Figure and Dimension.....	2
1.1	Figure.....	2
1.2	Technical Specification.....	3
2	Part Name.....	3
3	Warning.....	3
4	Operation.....	4
4.1	Lift drum.....	4
4.2	Transport drum.....	4
4.3	Put down drum.....	4
5	Hydraulic Circuit Diagram.....	5
6	Exploded View & Part List.....	6

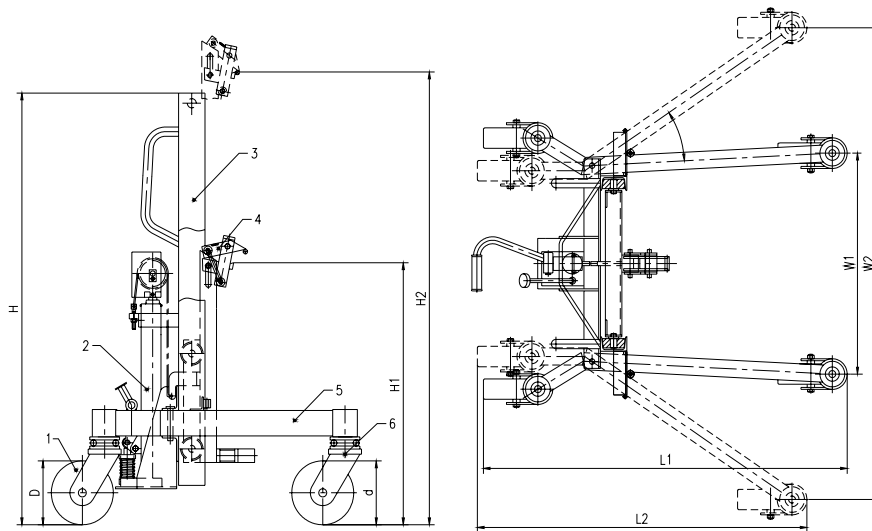
THANK YOU FOR USING THIS ERGONOMIC DRUM HANDLER. FOR YOUR SAFETY AND CORRECT OPERATION, PLEASE CAREFULLY READ THIS INSTRUCTION BEFORE USING IT.

NOTE: All of the information reported herein is based on data available at the moment of printing. The factory reserves the right to modify its own products at any moment without notice and incurring in any sanction. So it is suggested to always verify possible updates.

This ergonomic drum handler is used to clamp the drum on the ground or stock for load and unload, transit, stack the drum. It is used widely to factory, depot and etc.

1. FIGURE AND PARAMETER

1.1 Figure



1.2 Specification and Parameter

- Ergonomic lifts, transports, and places poly steel, or fiber drums on or off pallets.
- A spring-loaded clamp securely holds any rimmed drum
- It have swivel steering wheels for easy positioning and precision roller bearing load wheels for maximum stability
- Legs adjust for different pallet. Handles 55 or 85 gallon drums

Model		DT400
Lifting Capacity		400 kg
Lifting Height		1070 mm
Front wheel Dia.		200 mm
Rear wheel Dia.		880 mm
Length	L1	1105 mm
	L2	1000 mm
Height	H	1810 mm
	H1	880 mm
	H2	1950 mm
Weight	W1	720 mm
	W2	1390 mm
Lifting per stroke		11.6 mm
Drum size		55 or 85 gallon
Net weight		100 kg
Overall Size		1105×1390×1810

2. PART NAME

- (1) Rear Wheel (Swivel Wheel)
- (2) Cylinder Assy.
- (3) Track Assy.

- (4) Support & Clamp Machine
- (5) Truckle Assy.
- (6) Front Wheel (Swivel Wheel)
- (7) Locating Pin
- (8) Split Pin

3. Assemble And Adjust

To assemble the lift, follow the installation below.

- (1) Insure the part is intactness, contained the part No. 1、 5、 6 (truckle assy.), 2、 3、 4 (cylinder and track assy.), 7 (locating pin), 8 (split pin) and screw
- (2) Insert the part No. 1, 5, 6 into the groove of part No. 2,3, 4 (Track Assy.) on the smooth floor surface
- (3) Insert the part No. 7 (Locating Pin) and insure it against the part No. 8 (Split Pin)
- (4) Take the simple screw plunger on the top of the part No. 2 down, and then tweak the ventilative screw plunger.
- (5) The work platform raise or decline reposefully on unloading
- (6) The work platform raises or declines reposefully, the truckle move flexibly, and the brake is good on loading

NOTE: The numerals refer to figure upper.

4. WARNING

- 4.1 Never overload this truck beyond its rated capacity.
- 4.2 Place the drum on the low position when do not lift.
- 4.3 Raise slightly the drum on the ground when transit drum, do not need lift it higher.

5. OPERATION

5.1 Lift drum

Move the drum handler to drum front for closing the forepart of support & clamp machine (4) with drum, then step on the brake of rear wheel (1). The upper joggle of support & clamp machine (4) rotate adown to clamp the drum after stepping on pedal lever, and go on stepping, the drum will be raised.

5.2 Transport drum

Release the brake after raising the drum, and push the handle of track frame assy. (3), then can move the drum.

Notice: For the sake of safety it is recommended to move the drum while the drum's position is as low as possible.

5.3 Put down drum

After moving the drum to the destination, slowly release the degressive valve lever until drum stand on the ground, the upper joggle of support & clamp machine will release the drum, then screw the degressive valve lever.

Notice: For the sake of safety it is recommended to release the degressive as slow as possible while put down the drum.

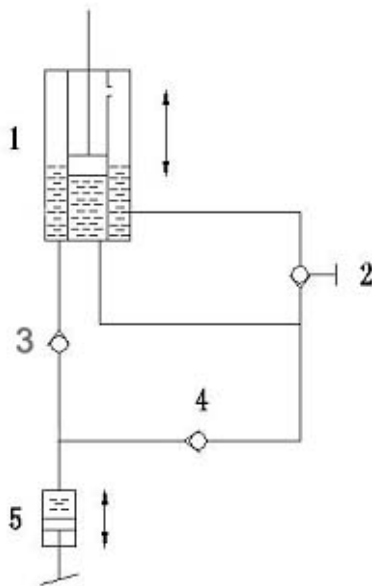
5.4 How to change oil

It is necessary to change oil after the drum handler work adding up 20 hours at the first time. Please change oil per 300 hours later. If using the drum handler short, please change oil per 18 months.

Temperature	Hydraulic Oil
-5°C ~ +45°C	L-HM68 (be equal to ISOVG68)
-15°C ~ -5°C	L-HM46 (be equal to ISOVG46)

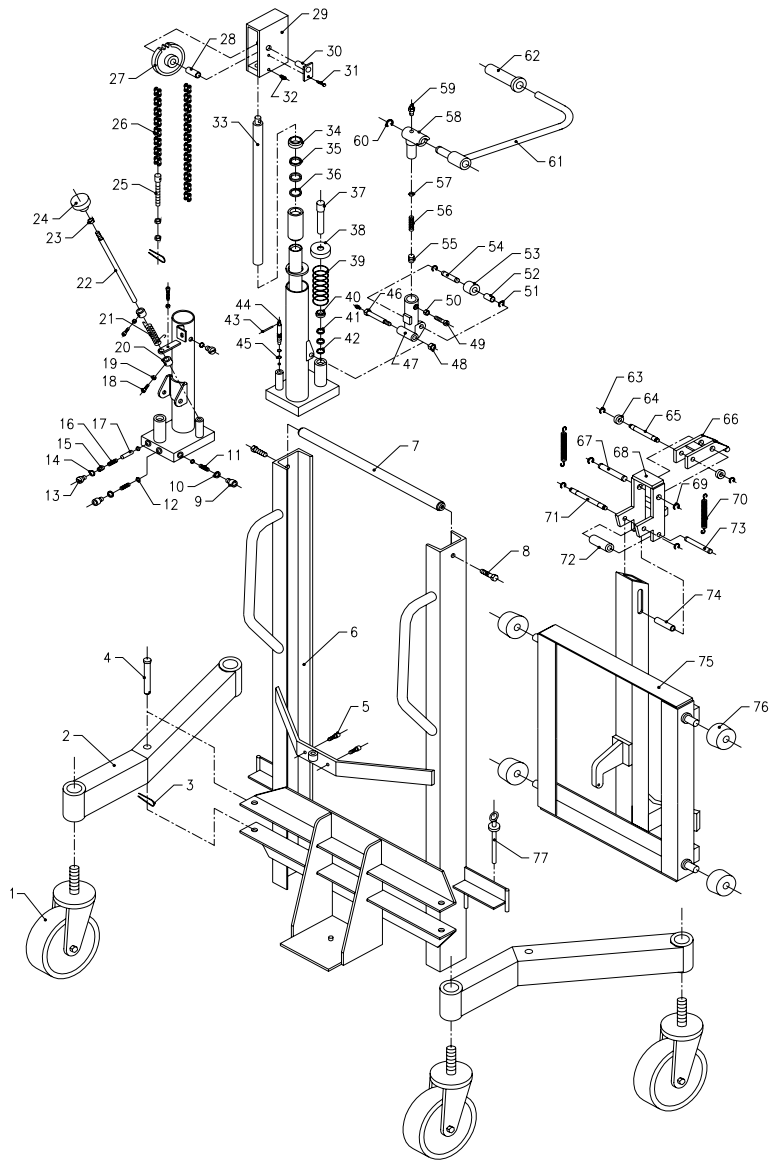
NOTE: The plunger rod must be the lowest position while change oil, and add the oil into the oil hole

6. HYDRAULIC CIRCUIT DIAGRAM



No.	Description
1	Hydraulic Cylinder
2	Swivel Discharge Valve
3	Relief valve
4	Work valve
5	Work Cylinder

7. EXPLODED VIEW & PART LIST



No.	Description	Qty	No.	Description	Qty
1	Truckle	4	40	Dustproof Ring	1
2	Truck Frame Assy.	2	41	O-ring	2
3	Split Pin	2	42	Nylon washer	1
4	Connecting Pin Axle	2	43	Spring Pin	1
5	Bolt	2	44	Valve Core	1
6	Chassis Assy.	1	45	O-ring	2
7	Plunger Rod	1	46	Pin Axle	1
8	Bolt	2	47	Plunger Seat	1
9	Inside Hex Screw	2	48	Nut	1
10	Copper Washer	2	49	Hex Bolt	1
11	Taper Spring	2	50	Hex Nut	1
12	Steel ball	4	51	Split Pin	2
13	Screw Plunger	2	52	Bearing	1
14	O-ring	2	53	Ring	1
15	Locking Screw	1	54	Pin Axle	1
16	Spring	1	55	Adjusting Screw	1
17	Short Pin	1	56	Spring	1
18	Inside Hex Screw	2	57	Steel Ball	1
19	Hex Nut	2	58	Axle Sheath	1
20	Locating Ring	2	59	Oil Cup	2
21	Torsional Spring	1	60	Split Ring	1
22	Unitary Valve Rod	1	61	Pedal Rod	1
23	Hex Nut	1	62	Rubber Sheath	1
24	Handle	1	63	Split Ring	4
25	Chain Bolt	1	64	Roller	2
26	Roller Chain	1	65	Pin Axle	1

No.	Description	Qty	No.	Description	Qty
27	Chain Wheel	1	66	Upper Joggle Assy.	1
28	Bear	1	67	Pin Axle	1
29	Cover	1	68	Lower Joggle Assy.	1
30	Pin Axle	1	69	Split Ring	2
31	Hex Bolt	1	70	Pulling Spring	2
32	Locking Bolt	1	71	Pin Axle	1
33	Plunger Rod	1	72	Roller	1
34	Dustproof Ring	1	73	Pin Axle	1
35	O-ring	2	74	Sliding Sheath	1
36	Nylon Washer	1	75	Supporting Assy. 1	1
37	Pump Rod	1	76	Roller Wheel	4
38	Cover	1	77	Pin	2
39	Spring	1			