

Instruction Manual

LIFT & TILT TABLE



Note: Owner/Operator must read and understand this instruction manual before using the lift & tilt table.

THANK YOU VERY MUCH FOR SELECTING OUR LIFT & TILT TABLE. THIS INSTRUCTION MANUAL DESCRIBES CORRECT OPERATING METHOD TO ENSURE PROLONGED SERVICE LIFE. PLEASE READ AND COMPLETELY UNDERSTAND THIS MANUAL BEFORE OPERATING THE LIFT & TILT TABLE. ALWAYS KEEP THIS MANUAL AT AN APPROPRIATE PLACE. IF THE MANUAL OR WARNING DECAL IS MISSING, PLEASE CONTACT WITH OUR DEALER.

1.



WARNING! *If operating the lift & tilt table improperly, a person may be seriously injured. Therefore, operate properly according to the following instructions.*

Do not put foot or hand in scissors mechanism.

Do not allow other people to stand in front of or behind the lift & tilt table when it is moving.

Do not move lift & tilt table when the table is at lifting position. Otherwise, load could fall down.

Do not enter under the lift & tilt table.

Do not overload the lift & tilt table.

Do not put foot in front of rolling wheels. Otherwise, injury could result.

Watch difference of floor lever when moving the lift & tilt table. Load could fall down.

Do not use the lift & tilt table on a sloping or soft ground. Otherwise, the lift & tilt table may become uncontrollable and create danger.

Do not lift people. Otherwise, people could fall down and suffer severe injury.

2.



CAUTION!

If operating the lift & tilt table improperly, a person may be injured. Therefore, operate properly according to the following instructions.

Read this instruction manual carefully and completely understand how to operate the lift & tilt table.

The lift & tilt table is a movable lifter designed to lift or lower rated load on the table. Do not use it for other purpose than its intended use.

Do not allow a person to operate the lift & tilt table, who does not understand its operation.

Do not lower the table too fast. Otherwise, load could fall down to create danger.

Keep watching the condition of load. Stop operating the lift & tilt table right if load becomes unstable.

Before lifting or lowering the table, make sure to brake the lift table.

Ensure the balance of loading. Do not side or end load on the table. Load must be distributed on at least 80% of table area.

Practice maintenance work according to service instructions.

Do not modify the lift & tilt table without manufacturer's written consent.

Remove load from the table and use safety rod (Part No. 98) to prevent the table lowering when servicing the lift table.

The lift & tilt table is not designed to be waterproof. Use the lift table under dry condition.

Store the lift & tilt table indoor, and keep away from rain, water, or acid.

3. NAME OF PARTS



4. DAILY INSPECTION

Before operating, please check the lift & tilt table according to the following points.



CAUTION! Do not use the lift & tilt table if any malfunction or fault is found.

Check if there is any scratch, bending or cracking on the lift & tilt table.

Check if there is any hydraulic oil leakage from the hydraulic unit.

Check if there is abnormal vertical creep of the table.

Check the smooth movement of the wheels.

Check the function of the brakes.

Check if all the bolts and nuts are firmly tightened.

5. OPERATION

How to Use the Brake

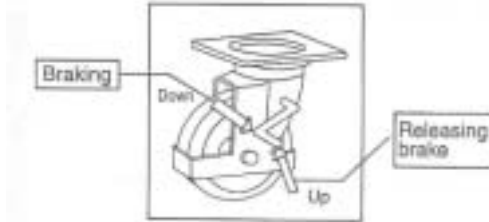


CAUTION! Brake the lift & tilt table when not moving it in order to avoid sudden movement.
The brake is equipped with the swivel caster on the right side.

Brake the wheel, press the brake pedal.

Releasing the brake, lift up the brake pedal.

(Refer to the following figure.)



Lifting the Table



WARNING! Do not overload the lift & tilt table.
Ensure the balance of loading. Do not side or end load on the table. Load must be contributed on at least 80% of table area.

As the table is lifting, load will incline forward continuously.

When the table is lifted high, make sure that load should not move or fall off.

The hydraulic unit is designed to hold the table. The table should not stay at a lifting position for a long time.

Press the lifting pedal several times until the table reaches any desired position.

The table does not elevate after reaching the highest position even though the lifting pedal is pressed.

The table lowers slightly after reaching the highest position.

Lowering the Table



WARNING!

Do not put foot or hand in scissors mechanism.

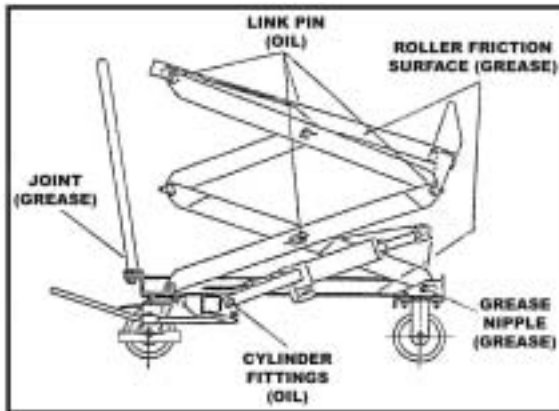
To lower the table, pull the lowering lever up.

6. SPECIFICATIONS

Model	Capacity (kg)	Table			L x W x H (mm x mm x mm)	To-and-fro Lifting Times	Diameter of Wheel (mm)	Net Weight (kg)
		Table Size (mm x mm)	Front (mm)	Rear (mm)				
BL40	400	520 x 830	435	990	1355 x 520 x 1550	50	150	155
			438	1560				
BL80	800	520 x 830	440	1000	1355 x 520 x 1550	68	150	172
			438	1575				

7. SERVICE INSTRUCTIONS

Lubricate each point described below every month.

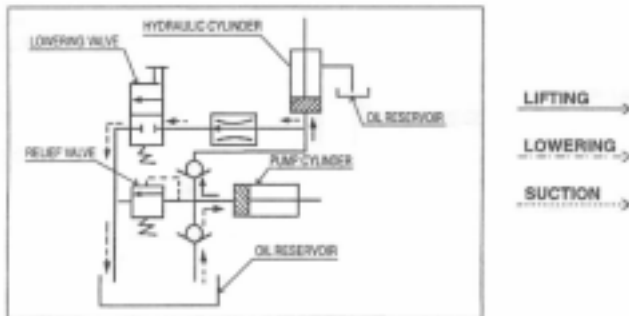


Change hydraulic oil every year.

Lubricating Points

- (1) Fitting of Cylinder Oil
- (2) Roller Friction Surface Grease
- (3) Link Pin Oil
- (4) Pedal Fitting Point Oil
- (5) Link Centre Pin Oil
- (6) Joint Grease
- (7) Grease Nipple Grease

8. HYDRAULIC CIRCUIT



9. PARTS LIST & EXPLODED FIGURE

Item No.	Description	Remark
1	Seal Cover	
2	Cylinder Cover	
3	O-ring 63x2.65	
4	Piston Rod	
5	Piston	
6	Y-ring	
7	Retainer for Piston Rod	
8	Spacing Retainer 18	
9	Spacing Casing	
10	Cylinder	

11	Washer for Cylinder	
12	Reservoir	
13	O-ring 10x2.65	
14	Screw	
15	Washer for Reservoir	
16	Steel Ball	
17	O-ring 15x2.65	
18	Spring Base	
19	Regulating Slide-valve	
20	Regulating Pressure Spring	
21	Regulating Speed Spring	
22	O-ring 8x1.8	
23	Regulating Pressure Screw	
24	End Cover	
25	Regulating Speed Slide-casing	
26	Check Valve Screw	
27	Check Valve Casing	
28	O-ring 6.9x1.8	
29	Steel Ball 7	
30	Conical Valve	
31	Spring	
32	O-ring 10x1.8	
33	Lever	
34	Lever Bushing	
35	Washer 6	
36	Spring Washer 6	
37	Hexagonal Socket Screw M6x16	
38	O-ring 10.6x2.65	
39	Guiding Casing	
40	Spring	
41	Reflux Rod	
42	O-ring 4x1.8	

43	Protect Casing	
44	Pump Body	
45	Pump Body for Plunger	
46	Y-ring	
47	Pump Plunger	
48	Sealing Cover d18xD30 x7	
49	Spring	
50	Spring Base	
51	Handle	
52	Panel	
53	Nut	
54	Steel Wire	
55	Tube for Steel Wire	
56	Spacing Casing	
57	Spring Washer 12	
58	Hexagonal Socket Screw M12x40	
59	Pin Axle	
60	Washer 8	
61	Split Pin	
62	U Fork	
63	Washer 8	
64	Spring Washer 8	
65	Screw	
66	Pedal Bent Pipe	
67	Bolt	
68	Shake Link	
66	Spring	
70	Retaining Ring for Axle 10	
71	Pin Axle	
72	Link	
73	Hexagonal Socket Screw M10	
74	Washer 10	

75	Spring Washer 10	
76	Nut M10	
77	Frame of Rear Wheel	
77A	Frame of Front Wheel	
78	Nut M12	
79	Washer 12	
80	Spacing Casing	
81	Wheel	
82	Bolt	
83	Pin Axle	
84	Retaining Ring for Axle 20	
85	Chassis	
86	Screw M8x12	
87	Pin Axle	
88	Slotting Nut M16x1.5	
89	Washer	
90	Splitting Pin	
91	Pin Axle	
92	Bushing	
93	Bushing	
94	Internal Scissors Lever for Table	
95	Nut M6	
96	Screw M8x12	
97	Internal Scissors Lever for Table	
98	Scissors Lever	
99	Spring Washer 6	
100	Table	
101	Roller for Table	
102	Bushing	
103	Retaining Ring for Axle 18	
104	Safety Rod	
105	Pin 8x14	

106	Nut M10	
107	Bolt M10x40	
108	Internal Scissors Lever for Chassis	
109	External Scissors Lever for Chassis	
110	Table	
111	Pin Axle	
112	Assembly of Guard	
113	Washer 6	
114	Bolt M6x20	Mechanical Strength Grade 8.8
A	Piston Assembly	
B	Pump Base Assembly	
C	Pump Piston Assembly	
D	Handle Assembly	
E	Pedal Assembly	
F	Swivel Wheel Assembly	
G	Front Wheel Assembly	
H	Pump Assembly	
I	Seal Kit Assembly 1,3,6,13,17,22,28,32,38,46,48	

