

Instruction Manual

Forklift-Karrier



Note: The Owner/Operator must read carefully and understand all the information presented here before operation.

Content

1.	Figure and Parameter.....	1
1.1	HK285A (800lbs).....	1
1.2	HK285B (1500lbs).....	1
1.3	HK285A Figure.....	2
1.4	HK285B Figure.....	3
2.	Part Name.....	5
3.	Notice and Warning.....	5
4.	Operating Instructions.....	5
5.	Exploded View.....	7
5.1	HK285A.....	7
5.2	HK285B.....	8
6.	Part List.....	9
6.1	HK285A.....	9
6.2	HK285B.....	10

THANK YOU FOR USING THIS FORKLIFT-KARRIER. FOR YOUR SAFETY AND CORRECT OPERATION, PLEASE CAREFULLY READ THIS INSTRUCTION BEFORE USING IT.

NOTE: All of the information reported herein is based on data available at the moment of printing. The factory reserves the right to modify its own products at any moment without notice and incurring in any sanction. So it is suggested to always verify possible updates.

This series are used to clamp the drum. It can unload, transport and stack the drum, and also can spill the oil. It is used widely for the factory, storage, dock and port.

1. FIGURE AND PARAMETER

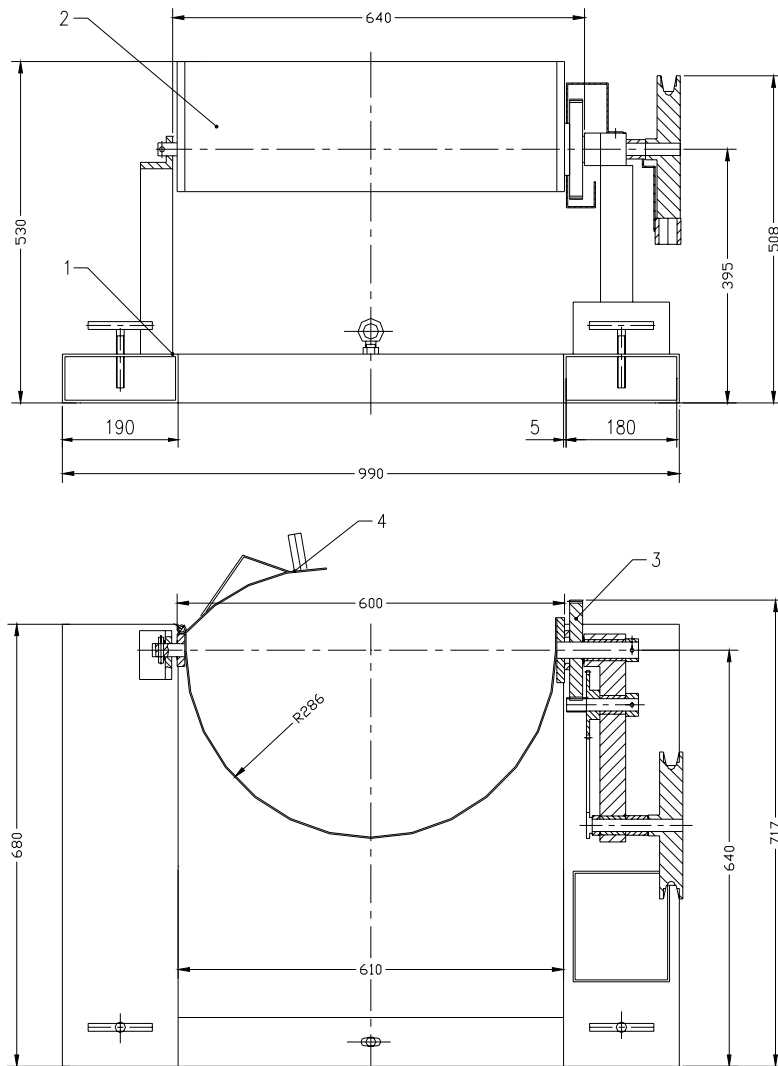
1.1 HK285A (800lbs)

Capacity (lbs)	Total Length (mm)	Total Width (mm)	Total Height (mm)	Fork width (mm)	Hoop Radius (mm)	Net Weight (Kg)
800	990	717	530	190	R286	70

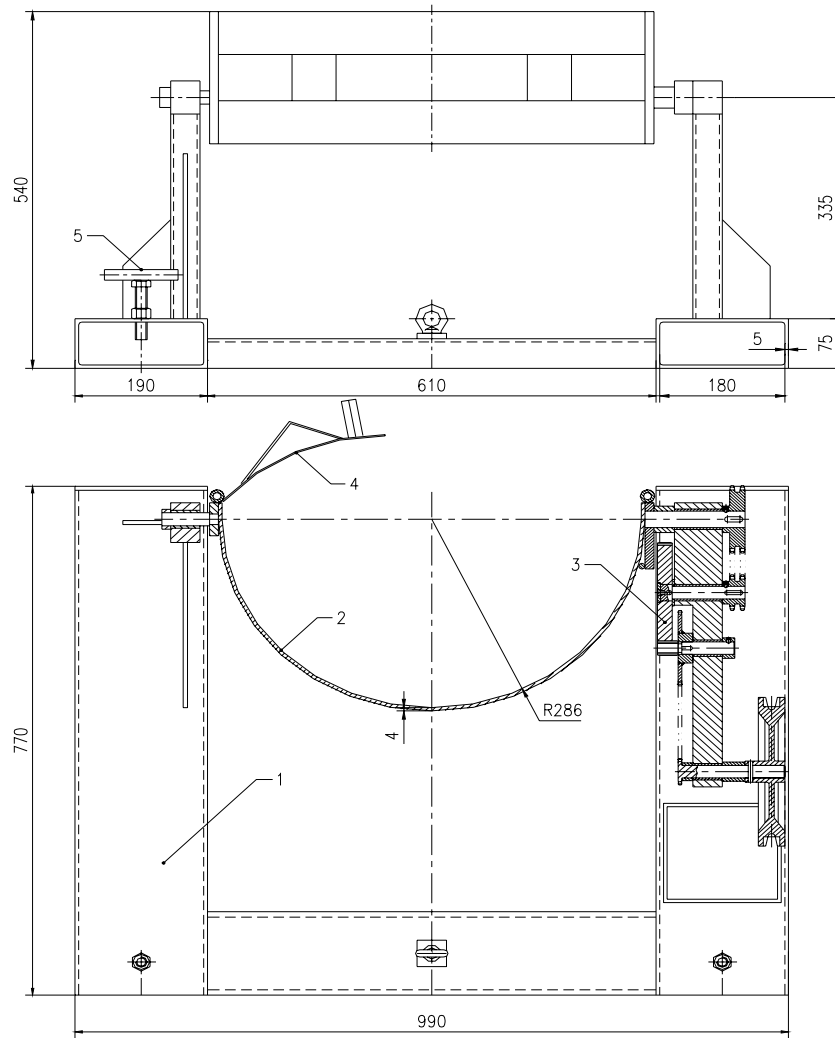
1.2 HK285B (1500lbs)

Capacity (lbs)	Total Length (mm)	Total Width (mm)	Total Height (mm)	Fork width (mm)	Hoop Radius (mm)	Net Weight (Kg)
1500	990	770	540	190	R286	97

1.3 HK285A Figure



1.4 HK285B Figure



2. PART NAME

- (1) Frame assembly
- (2) Drum hoop
- (3) Gear driver assembly
- (4) Drum clamp assembly
- (5) Fork tighten bolt

3. NOTICE AND WARNING

- (1) Do not use this product when it go wrong and need to be repaired.
- (2) Do not stand under any place of forklift when it is lifted
- (3) Do not overload this drum lifter beyond its rated capacity.
- (4) The hoop must clamp the drum middle position when lift the drum.
- (5) The location of drum should be lower when it do not need work.
- (6) The drum should be vertical and can not hit with the ground to avoid damaging the machinery when the forklift is moving.

4. OPERATING INSTRUCTIONS

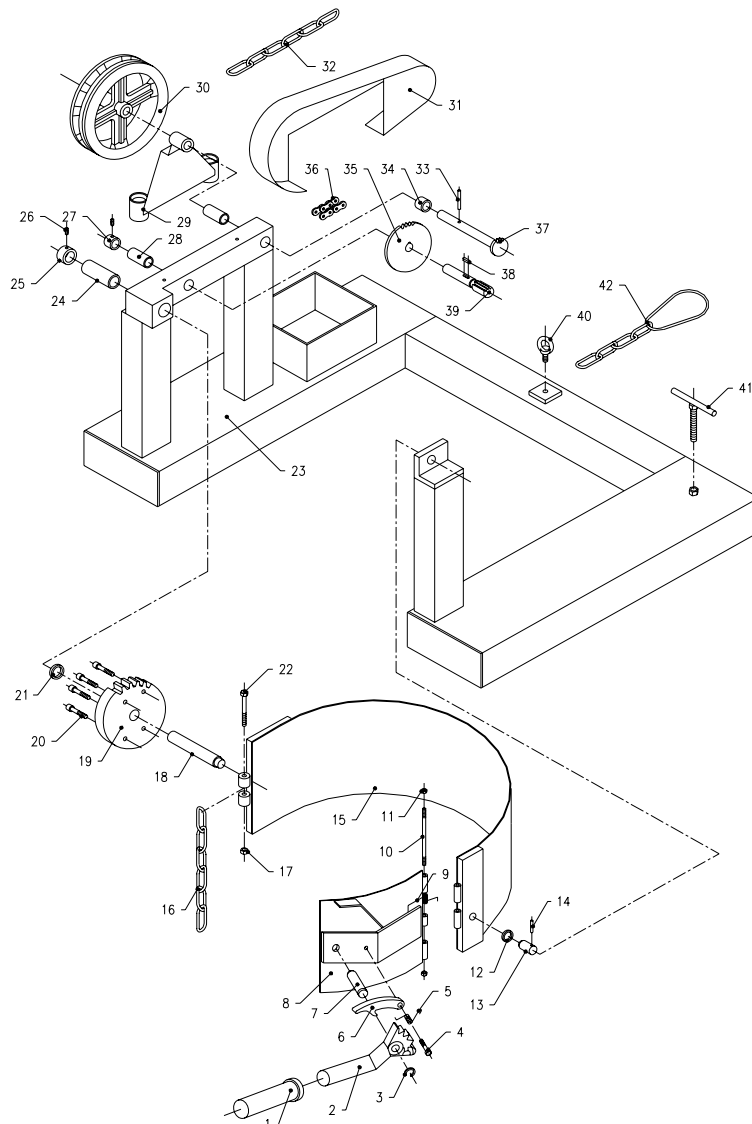
- 1) Adjust the forks so that the inside width between the forks is 24 1/2" minimum. One fork must be locked to bed plate.
- 2) Drive the truck forward to slip forks into fork sleeves. Attach safety chain to mast to secure drum carrier/rotator to forks.
- 3) Open carrier cradle full width and hook cradle chain on stud.
- 4) Drive truck with forks near- floor level to position carrier cradle around drum. Lock drum in place by clinching chain with ratchet tightener.
- 5) Remove control chain from box and place end of loop near

operator's seat.

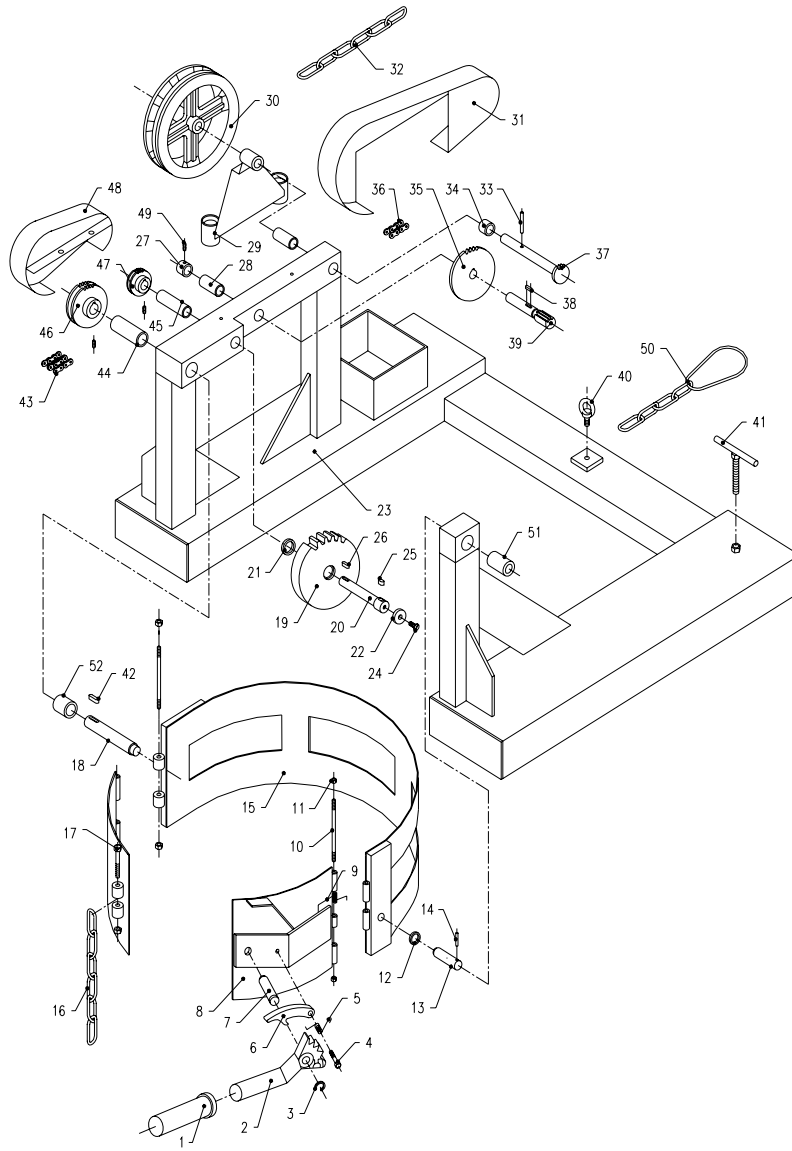
- 6) Raise forks and transport drum in VERTICAL position.
- 7) TO POUR DRUM: Pull on chain, rotating drum to angle required for emptying. For best control of drum pouring angle, pay out one side of the loop while pulling in the other.
- 8) After emptying, rotate drum back to vertical position and drive the truck to deliver drum.

5. EXPLODED VIEW

5.1 HK285A (800 lbs)



5.2 HK285B (1500lbs)



6、 PART LIST

6.1 HK285A

No.	Description	Qty	No.	Description	Qty
1	Rubber bushing	1	22	Hex bolt	1
2	Dentiform spanner	1	23	Pedestal ass.	1
3	Retaining ring	1	24	Bushing	1
4	Hex bolt	1	25	Aligning ring	1
5	Spring	1	26	Screw	2
6	Dentiform hook	1	27	Aligning ring	1
7	Pin	1	28	Bushing	2
8	Clamping ring	1	29	Chain rack	1
9	Spring	1	30	Chain wheel	1
10	Double-ended bolt	1	31	Chain cover	1
11	Nut	2	32	Galvanize chain	1
12	Ring	1	33	Spring pin	1
13	Pin	1	34	Ring	1
14	Spring pin	1	35	Big chain wheel	1
15	Hoop	1	36	Roller chain	1
16	Galvanize chain	1	37	Chain rod	1
17	Nut	1	38	Key	1
18	Pin	1	39	Gear axes	1
19	Big gear	1	40	Screw	1
20	Hex screw	4	41	Aligning bolt	2
21	Ring	1	42	Galvanize chain	1

6.2 HK285B

No.	Description	Qty	No.	Description	Qty
1	Rubber bushing	1	27	Aligning ring	1
2	Dentiform spanner	1	28	Bushing	2
3	Retaining ring	1	29	Chain rack	1
4	Hex bolt	1	30	Chain wheel	1
5	Spring	1	31	Chain cover	1
6	Dentiform hook	1	32	Galvanize chain	1
7	Pin	1	33	Spring pin	1
8	Clamping ring	1	34	Pin	1
9	Spring	1	35	Big chain	1
10	Double-ended bolt	1	36	Roller chain	1
11	Nut	2	37	Chain cover	1
12	Ring	1	38	Key	1
13	Pin	1	39	Gear axes	1
14	Spring pin	1	40	Screw	1
15	Hoop	1	41	Aligning bolt	2
16	Galvanize chain	1	42	Key	1
17	Hex bolt	1	43	Double roller chain	1
18	Pin	1	44	Bushing	1
19	Big gear	1	45	Bushing	1
20	Drive axes	4	46	Double big chain	1
21	Ring	1	47	Double small chain	1
22	Board	1	48	Chain cover	1
23	Pedestal ass.	1	49	Screw	3
24	Screw	1	50	Galvanize chain	1
25	Key	1	51	Bushing	1
26	Key	1	52	Ring	1